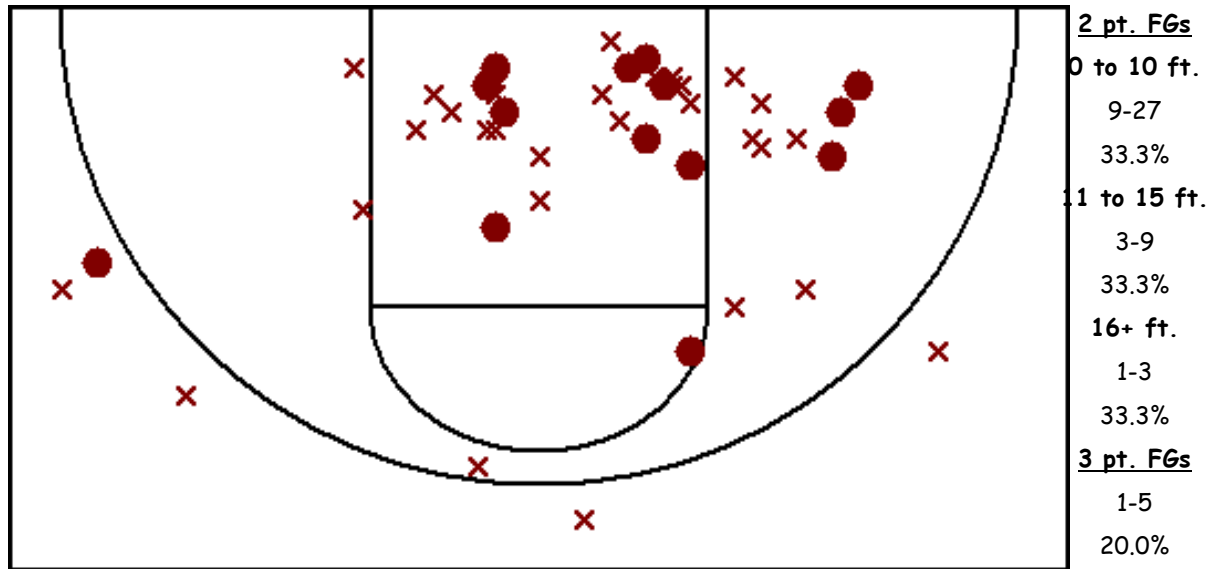


AinsworthJV.2.10 Team Shot Chart (at Lady Swede JV 08-09, 02/11/09, W 37-29)



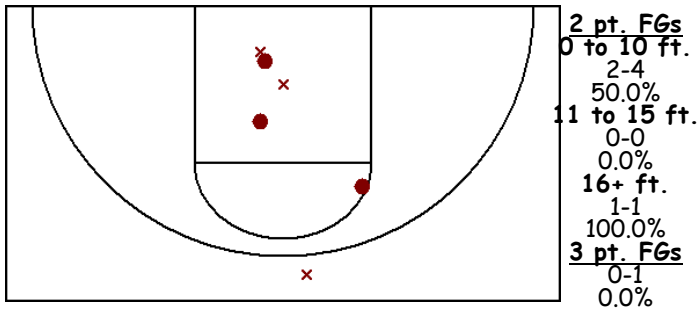
Player	GP	MIN	FGM-A	3PM-A	FTM-A	REB-O	AST	STL	BLK	TO	PF	PTS
#40	1	17	3-6	0-1	4-4	4-0	0	0	0	2	0	10
#34	1	20	3-7	0-0	2-2	1-0	0	0	0	2	2	8
#24	1	23	3-9	0-1	0-2	1-1	0	1	0	2	0	6
#32	1	19	1-6	0-0	2-2	1-0	0	0	0	3	1	4
#12	1	22	2-5	0-0	0-0	4-4	0	0	0	3	4	4
#14	1	24	1-4	1-3	0-0	4-1	0	0	0	1	0	3
#30	1	24	1-6	0-0	0-0	3-0	0	0	0	0	1	2
#20	1	10	0-1	0-0	0-0	0-0	0	0	0	2	0	0
<b>Totals:</b>	<b>1</b>	<b>32</b>	<b>14-44</b>	<b>1-5</b>	<b>8-10</b>	<b>18-6</b>	<b>0</b>	<b>1</b>	<b>0</b>	<b>15</b>	<b>8</b>	<b>37</b>
<b>Opponents:</b>	<b>1</b>	<b>32</b>	<b>12-51</b>	<b>1-7</b>	<b>4-8</b>	<b>20-10</b>	<b>5</b>	<b>2</b>	<b>1</b>	<b>17</b>	<b>14</b>	<b>29</b>

Percentages and Per Game Averages

Player	GP	MPG	FG%	3P%	FT%	REB-O	AST	STL	BLK	TO	PF	PTS
#40	1	17.0	50.0	0.0	100.0	4.0-0.0	0.0	0.0	0.0	2.0	0.0	10.0
#34	1	20.0	42.9	0.0	100.0	1.0-0.0	0.0	0.0	0.0	2.0	2.0	8.0
#24	1	23.0	33.3	0.0	0.0	1.0-1.0	0.0	1.0	0.0	2.0	0.0	6.0
#32	1	19.0	16.7	0.0	100.0	1.0-0.0	0.0	0.0	0.0	3.0	1.0	4.0
#12	1	22.0	40.0	0.0	0.0	4.0-4.0	0.0	0.0	0.0	3.0	4.0	4.0
#14	1	24.0	25.0	33.3	0.0	4.0-1.0	0.0	0.0	0.0	1.0	0.0	3.0
#30	1	24.0	16.7	0.0	0.0	3.0-0.0	0.0	0.0	0.0	0.0	1.0	2.0
#20	1	10.0	0.0	0.0	0.0	0.0-0.0	0.0	0.0	0.0	2.0	0.0	0.0
<b>Totals:</b>	<b>1</b>	<b>32.0</b>	<b>31.8</b>	<b>20.0</b>	<b>80.0</b>	<b>18.0-6.0</b>	<b>0.0</b>	<b>1.0</b>	<b>0.0</b>	<b>15.0</b>	<b>8.0</b>	<b>37.0</b>
<b>Opponents:</b>	<b>1</b>	<b>32.0</b>	<b>23.5</b>	<b>14.3</b>	<b>50.0</b>	<b>20.0-10.0</b>	<b>5.0</b>	<b>2.0</b>	<b>1.0</b>	<b>17.0</b>	<b>14.0</b>	<b>29.0</b>

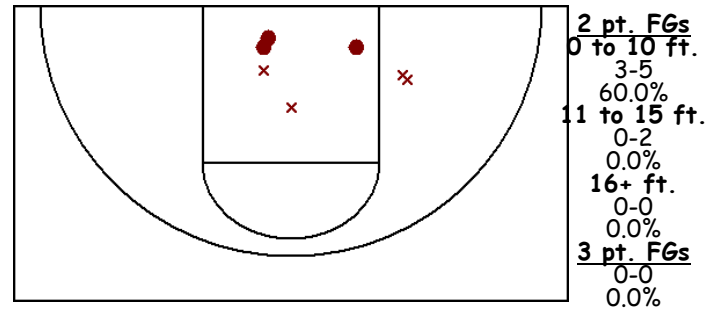
AinsworthJV.2.10 Player Shot Charts (at Lady Swede JV 08-09, 02/11/09, W 37-29)

#40



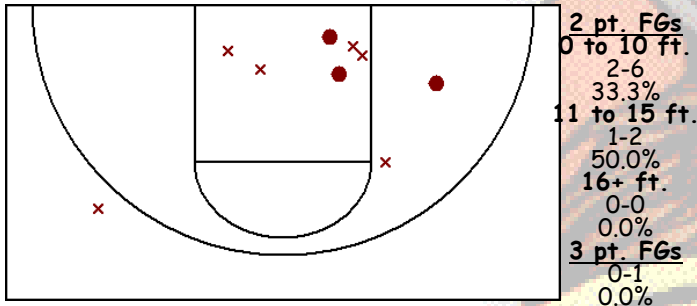
FG: 3-6 (50.0%)    3P: 0-1 (0.0%)    FT: 4-4 (100.0%)  
PTS: 10    REB-O: 4-0    AST: 0  
STL: 0    BLK: 0    TO: 2

#34



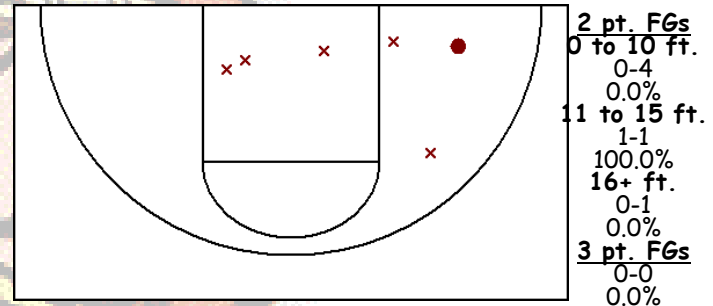
FG: 3-7 (42.9%)    3P: 0-0 (0.0%)    FT: 2-2 (100.0%)  
PTS: 8    REB-O: 1-0    AST: 0  
STL: 0    BLK: 0    TO: 2

#24



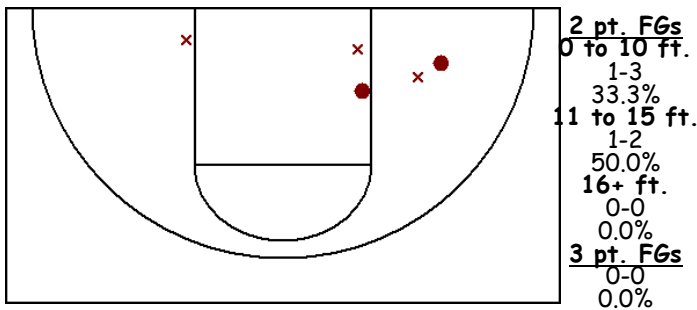
FG: 3-9 (33.3%)    3P: 0-1 (0.0%)    FT: 0-2 (0.0%)  
PTS: 6    REB-O: 1-1    AST: 0  
STL: 1    BLK: 0    TO: 2

#32



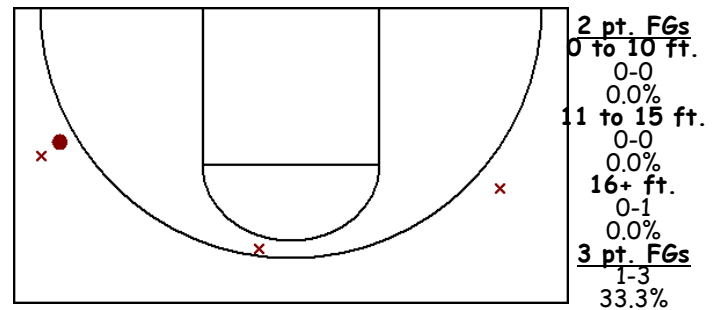
FG: 1-6 (16.7%)    3P: 0-0 (0.0%)    FT: 2-2 (100.0%)  
PTS: 4    REB-O: 1-0    AST: 0  
STL: 0    BLK: 0    TO: 3

#12



FG: 2-5 (40.0%)    3P: 0-0 (0.0%)    FT: 0-0 (0.0%)  
PTS: 4    REB-O: 4-4    AST: 0  
STL: 0    BLK: 0    TO: 3

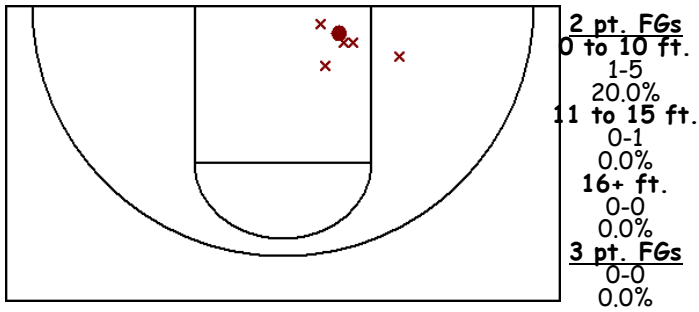
#14



FG: 1-4 (25.0%)    3P: 1-3 (33.3%)    FT: 0-0 (0.0%)  
PTS: 3    REB-O: 4-1    AST: 0  
STL: 0    BLK: 0    TO: 1

AinsworthJV.2.10 Player Shot Charts (at Lady Swede JV 08-09, 02/11/09, W 37-29)

#30

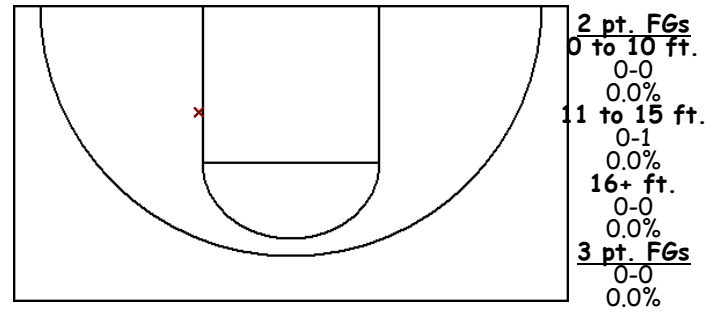


FG: 1-6 (16.7%)  
PTS: 2  
STL: 0

3P: 0-0 (0.0%)  
REB-O: 3-0  
BLK: 0

FT: 0-0 (0.0%)  
AST: 0  
TO: 0

#20



FG: 0-1 (0.0%)  
PTS: 0  
STL: 0

3P: 0-0 (0.0%)  
REB-O: 0-0  
BLK: 0

FT: 0-0 (0.0%)  
AST: 0  
TO: 2

